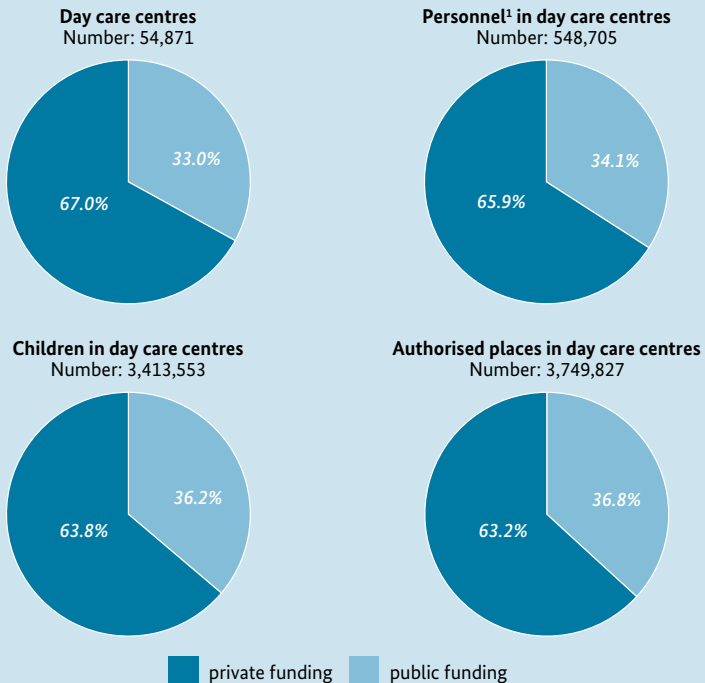


Fig. 26 Day care centres, personnel, number of children and number of authorised places (at 01 March 2016)



1) Educational staff (excluding exempted centre management, administration, housekeeping and building services).

Source: Federal Statistical Office, Statistics on child and youth welfare; calculations of the DZHW

BMBF's Data Portal: Figure link: www.datenportal.bmbf.de/fig-26

Additional data: www.datenportal.bmbf.de/en/2.2.1